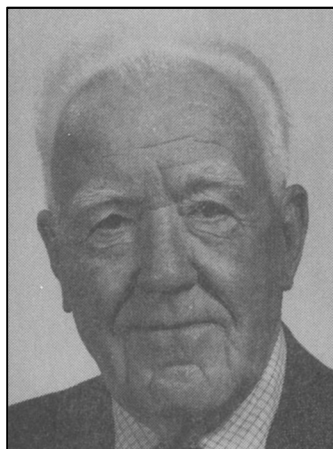


Charles Gill – 1982 Hall of Fame Inductee



Charles Gill was born in Edinburgh, Scotland, but his home became Idaho. Mr. Gill devoted over 40 years of his life to the service of the youth and adults of his community and state. He was a teacher, counselor, and administrator in Boise, Payette, Burley, and Weiser, but his first love was coaching.

During his career he coached nearly all sports, including being one of the first golf coaches in the state of Idaho. He was influential in starting the state golf tournament. He was also one of the top track starters for many years and served on the National Track Rules Committee. He is a former president of the State Coaches Association.